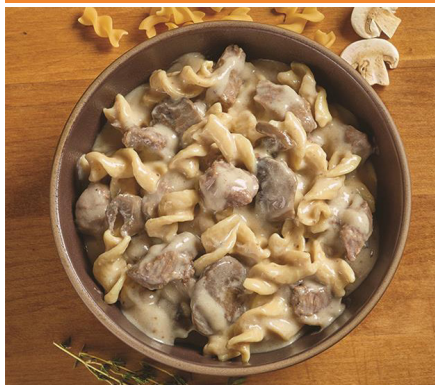


ITEM #:46886  
**BLOUNT ENTREES**

Case UPC: 10077958468869  
 Item UPC: 077958468862



**[REFRIGERATED]**  
**Beef Stroganoff with Noodles**

Tender stew beef in a decadent sour cream sauce with egg noodles.

**Nutrition Facts**

**Serving size 8oz (227g)**

**Amount per serving**  
**Calories 260**

	% Daily Value*
<b>Total Fat</b> 10g	<b>13%</b>
Saturated Fat 5g	<b>25%</b>
Trans Fat 0g	
<b>Cholesterol</b> 55mg	<b>18%</b>
<b>Sodium</b> 930mg	<b>40%</b>
<b>Total Carbohydrate</b> 27g	<b>10%</b>
Dietary Fiber 1g	<b>4%</b>
Total Sugars 4g	
Includes 1g Added Sugars	<b>2%</b>
<b>Protein</b> 14g	
Vitamin D 0.1mcg 0% • Calcium 50mg 4%	
Iron 1.4mg 8% • Potassium 200mg 4%	

\*The % Daily Value (DV) tells you how much a nutrient in a serving of food contributes to a daily diet. 2,000 calories a day is used for general nutrition advice.

**INGREDIENTS:** Cooked Enriched Pasta (Water, Semolina, Eggs, Egg Whites, Niacin, Ferrous Sulfate, Thiamin Mononitrate, Riboflavin, Folic Acid), Seasoned Diced Beef (Beef, Beef Broth, Salt), Water, Light Cream, Sour Cream (Cultured Cream), Mushrooms, Onions, Contains 2% or less of: Beef Base (Roasted Beef, Salt, Sugar, Dextrose, Corn Oil, Beef Stock, Dried Whey, Maltodextrin, Caramel Color, Natural Flavor), Modified Corn Starch, Wheat Flour, Worcestershire Sauce (Distilled White Vinegar, Molasses, Sugar, Water, Salt, Onions, Anchovies, Garlic, Cloves, Tamarind Extract, Natural Flavor, Chili Pepper Extract), Chicken Fat, Beef Stock Concentrate (Beef, Beef Stock), Natural Flavor, Sugar, Xanthan Gum, Whey Protein Concentrate, Lactic Acid, Salt, Yeast Extract, Porcini Mushroom Powder, Dehydrated Onion, Garlic Powder, Nisin Preparation and Spices.

**CONTAINS:** Anchovy, Egg, Milk and Wheat.

**Case Configuration:**

Case Pack: 4/4lb bags  
 Net Weight: 16 lb  
 Gross Weight: 17.5 lb  
 Case Cube: 0.32

**Pallet Information**

HI/TL: 4/18  
 Cases per Pallet: 72

**Dimensions**

Length: 12.20"  
 Width: 7.30"  
 Height: 6.20"

